

The logo for Multisoft, featuring the word "multisoft" in a white, lowercase, serif font. The text is set against a dark blue trapezoidal background that is part of a larger blue banner at the top of the slide. The background of the slide is a lighter blue with a faint, abstract geometric pattern of overlapping triangles and lines.

MCSE- Free live Online Webinar!  
**WINDOWS SERVER 2012**

Website: [www.multisoftvirtualacademy.com](http://www.multisoftvirtualacademy.com)

Email: [info@multisoftvirtualacademy.com](mailto:info@multisoftvirtualacademy.com)

Contact No: +918130666206/209

# Windows Server 2012

## New Features and Certifications

- Certification Changes
  - Microsoft Certified Solution Expert in Windows Server 2012
  - Microsoft Certified Solution Administrator in Windows Server 2012
- Administration Changes
  - Screen and Navigation changes
- PowerShell changes
  - Version 3.0 with 2400 cmdlets

# Starting from the beginning: Become an MCSA

- Pass the following 3 tests to gain the equivalent of passing the 70-417 test
  - 70-410
    - Installing and Configuring Windows Server® 2012
  - 70-411
    - Administering Windows Server® 2012
  - 70-412
    - Configuring Advanced Windows Server® 2012 Services
    - Then consider continuing on for an MCSE in the 3 previous categories of Desktop, Private cloud or Server Administration

## Upgrading from MCITP to MCSE

- Must renew MCSE status every three years!
- MCITP upgrade test is 70-417 (course 20417)
- MCITP accepted certifications includes:
  - Lync Administrator
  - SharePoint Administrator
  - Desktop Administrator
  - Enterprise Messaging Administrator
  - Windows Server 2008 Administrator

# Pass the 70-417 upgrade test THEN:

- Take and pass the specialist area tests shown below
- Determine which of 3 MCSE specialist areas to focus on:
  - **MCSE in Server Infrastructure**
    - 70-413 Designing and Implementing a Server Infrastructure
    - 70-414 Implementing an Advanced Server Infrastructure
  - **MCSE in Desktop Infrastructure**
    - 70-415 Implementing a Desktop Infrastructure
    - 70-416 Implementing Desktop Application Environments

# MCSE Information continued

- **MCSE in Private Cloud Infrastructure**
  - 70-246 Monitoring and Operating a Private Cloud with System Center 2012, Course 10751 (5 days)
  - 70-247 Configuring and Deploying a Private Cloud with System Center 2017, Course 10750 (5 days)

multisoft



Some of the New Administration features of  
Windows Server 2012

The screenshot displays the Active Directory Administrative Center interface. The window title is "Active Directory Administrative Center". The breadcrumb navigation shows "Active Directory Administrative Center > Overview". The left-hand navigation pane includes "Active Directory...", "Overview", "Adatum (local)", "Dynamic Access Control", and "Global Search". The main content area is divided into two panels: "RESET PASSWORD" and "GLOBAL SEARCH".

**RESET PASSWORD**

User name:

Password:

Confirm password:

User must change password at next log on

Unlock account

**GLOBAL SEARCH**

Search:

Scope:

CONTENT

WINDOWS POWERSHELL HISTORY



# Password Settings Objects

- You can use fine-grained password policies to specify multiple password policies within a single domain
- Fine-grained password policies:
  - Apply only to user objects (or inetOrgPerson objects) and global security groups
  - Cannot be applied to an OU directly
  - Do not interfere with custom password filters that you might use in the same domain

# Configuring Password Settings Objects

Windows Server 2012 provides two tools for configuring PSOs

- Windows PowerShell cmdlets
  - New-ADFineGrainedPasswordPolicy
  - Add-FineGrainedPasswordPolicySubject
- Active Directory Administrative Center
  - Is a graphical user interface
  - Uses Windows PowerShell cmdlets to create and manage PSOs

# Managed Service Account

- Use to automate password and SPN management for service accounts used by services and applications
- Requires a Windows Server 2008 R2 or Windows Server 2012 server installed with:
  - .NET Framework 3.5.x
  - Active Directory module for Windows PowerShell
- Recommended to run with AD DS configured at the Windows Server 2008 R2 functional level or higher
- Can be used in a Windows Server 2003 or 2008 AD DS environment:
  - With Windows Server 2008 R2 schema updates
  - With Active Directory Management Gateway Service

# Group Managed Service Accounts

Group managed service accounts extend the capability of standard managed service accounts by:

- Enabling an MSA to be used on more than one computer in the domain
- Storing MSA authentication information on domain controllers

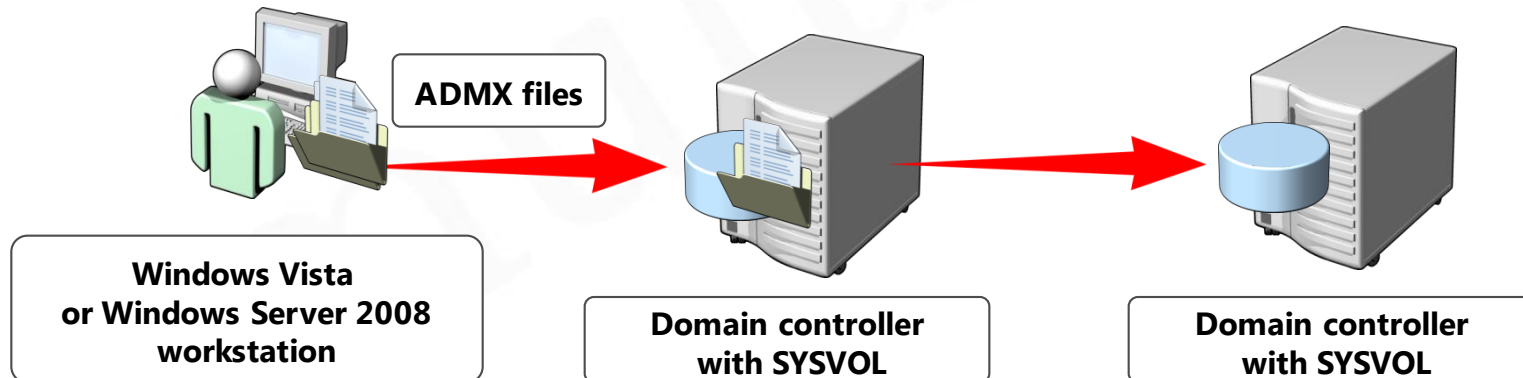
Group MSA requirements:

- Must have at least one Windows Server 2012 domain controller
- Must have a KDS root key created for the domain

# The Central Store

## The Central Store:

- Is a central repository for ADMX and ADML files
- Is stored in SYSVOL
- Must be created manually
- Is detected automatically by Windows Vista or Windows Server 2008



# Group Policy Preferences

- Group Policy preferences expand the range of configurable settings within a GPO

## Group Policy preferences:

- Enable IT professionals to configure, deploy, and manage settings that were not manageable by using Group Policy
- Are natively supported on Windows Server 2008 and Vista SP2 or newer
- Can be created, deleted, replaced, or updated



# Comparing Group Policy Preferences and GPO Settings

**Microsoft** Partner  
GOLD | 2007 Learning Solutions  
PARTNER OF THE YEAR

## Group Policy Settings

- Strictly enforce policy settings by writing the settings to areas of the registry that standard users cannot modify
- Typically disable the user interface for settings that Group Policy is managing
- Refresh policy settings at a regular interval

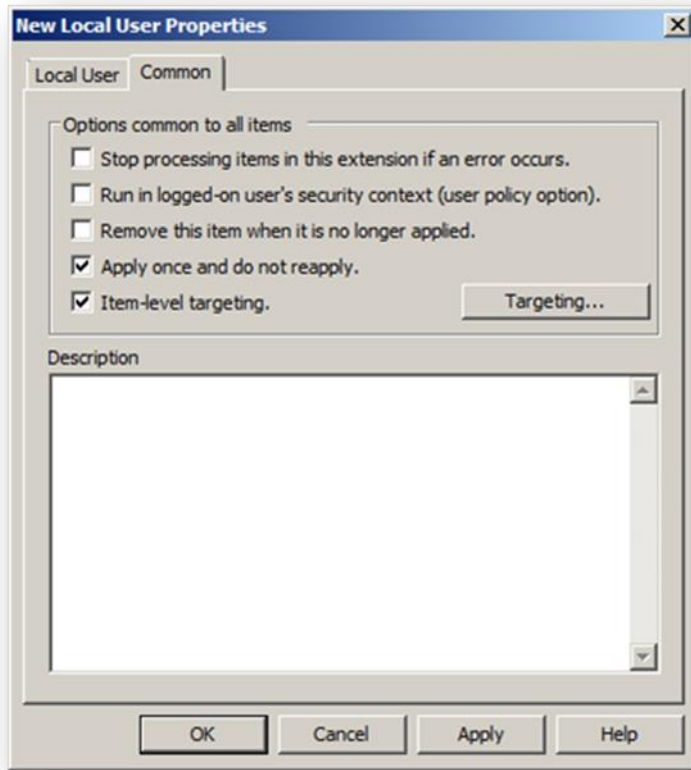
## Group Policy Preferences

- Are written to the normal locations in the registry that the application or operating system feature uses to store the setting
- Do not cause the application or operating system feature to disable the user interface for the settings they configure
- Refresh preferences by using the same interval as Group Policy settings by default

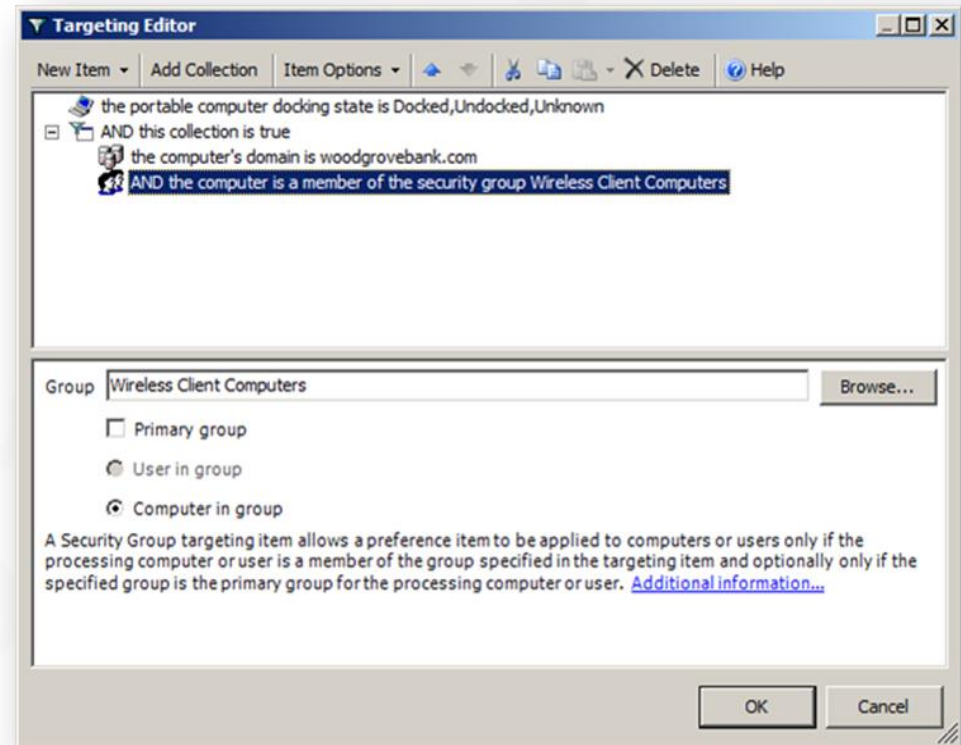
Allows editing of the ADMX file  
Extends the functionality of GPMC

Group policy  
Management Editor





Is used to configure additional options that control the behavior of a Group Policy preference item

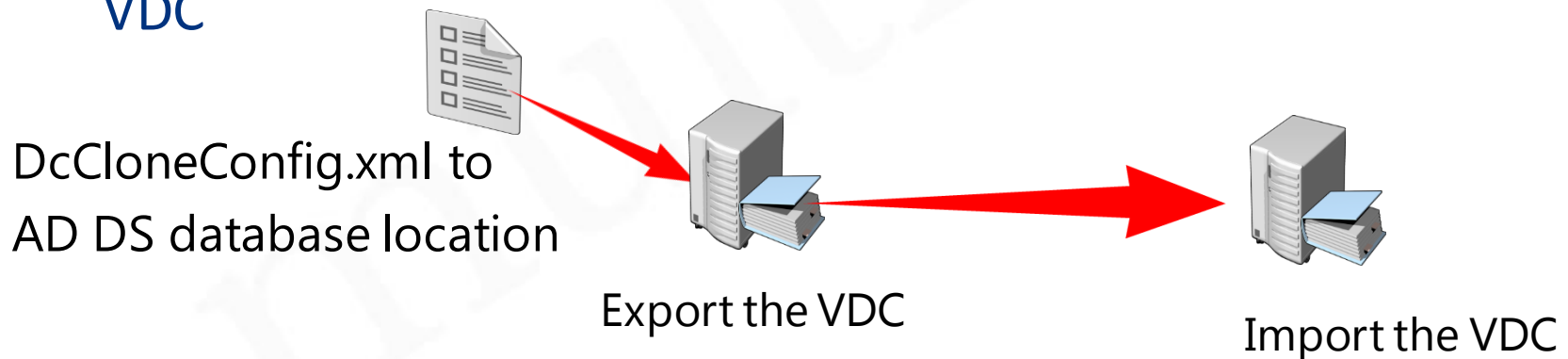


Determines to which users and computers a preference item applies

# Deploying a Cloned Virtualized Domain Controller

You can safely clone an existing virtual domain controller by:

1. Creating a DcCloneConfig.xml file and storing it in the AD DS database location
2. Taking the VDC offline and exporting it
3. Creating a new virtual machine by importing the exported VDC



# Overview of the Active Directory Module for Windows PowerShell

The Active Directory module for Windows PowerShell provides full administrative functionality in these areas:

- User management
- Computer management
- Group management
- OU management
- Password policy management
- Searching and modifying objects
- Forest and domain management
- Domain controller and operations masters management
- Managed service account management
- Site replication management
- Central access and claims management

multisoft

Thank You



Website: [www.multisoftvirtualacademy.com](http://www.multisoftvirtualacademy.com)

Email: [info@multisoftvirtualacademy.com](mailto:info@multisoftvirtualacademy.com)

Contact No: +918130666206/209